

Welcome

from your Co Headteachers,

Dear Families,

We want to start the new year with a huge thank you to all our amazing families for the thoughtful Christmas acts of kindness we received last term. They truly mean so much to all of us here at the school.

A big thank you as well to everyone who attended the Christmas service. A special shout-out to our fantastic staff and St. Mary's Church for making it such a magical event. It was a truly special moment, and we couldn't have done it without your support.

The children have made a very positive start back to the term! It really has been lovely to hear them talk about their Christmas experience and of course their favourite gifts!

Ofsted Report

We were thrilled to share our report earlier this week. It's a fantastic way to start the year with such great news! You can find a link to the full report on our school website, or click [here](#) to read it in full.

The quality of education	Good
Behaviour and attitudes	Good
Personal development	Good
Leadership and management	Good
Early years provision	Good

We're so proud of everyone's hard work and dedication that made this achievement possible. A huge congratulations to our entire school community!

Snow and Weather Changes

What a surprise it was to wake up to 10 degrees after planning for snow on Wednesday night! The changeable weather certainly keeps us on our toes. As we continue to monitor weather conditions, please take a moment to review our snow plan later in this newsletter.

iShare this Half Term: Living as a New Creation

"Therefore, if anyone is in Christ, he is a new creation; the old has gone, the new has come!" – 1 Corinthians 5:17

This half term, our iShare theme is '*Living as a New Creation*', inspired by the verse from 1 Corinthians. It reminds us that through God, we are constantly being renewed, and every day is a fresh opportunity to learn, grow, and create. Here are some key learning points we'll be focusing on:

- **Every day is a new day to live confidently and create new things.** Each day brings new lessons and experiences. We are encouraged to embrace these opportunities and step forward with confidence,



knowing that we can always grow and learn.

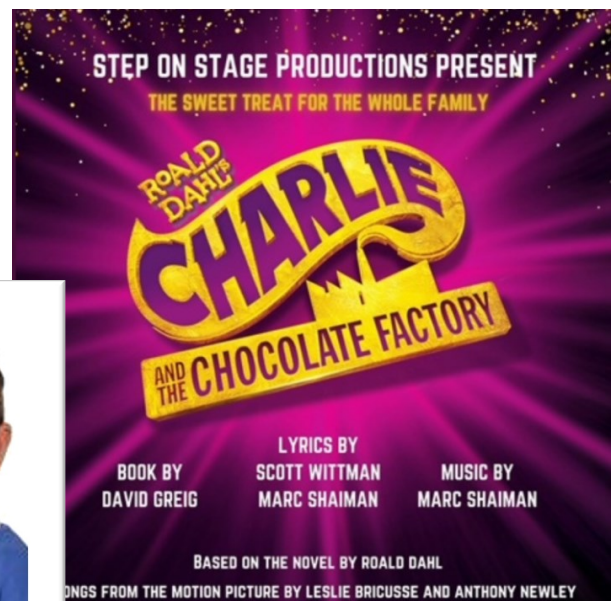
- **We are made new in God.** When we make mistakes or do something wrong, we can trust that God's love allows us to start fresh each day. We don't need to be held back by past mistakes; we can move forward with a clean slate.
- **God is a creative God.** Just look around at the beauty of the world—every sunrise, every flower, every experience reminds us of God's endless creativity. He is constantly making all things new.
- **We are all created to be different.** God made each of us unique, and that's something to celebrate! Our differences are a reflection of God's creativity, and by embracing who we are, we honour the One who created us.



We're looking forward to exploring these ideas further throughout the term and encouraging our pupils and community to live confidently as a new creation in Christ.

St Mary's Achievements

Congratulations to Alexa in Charlie and the Chocolate Factory at Hampton Hill Theatre! She has worked hard, with late-night rehearsals and amazing talent! Many will be watching over the next few days, and it's great to see her efforts come together on stage. Well done, Alexa!



Learning @ St Mary's

We've had a fun and exciting week of learning across the school! Here's a look at what each year group has been up to:

Year 1

In maths, Year 1 have been learning all about teen numbers, working on making numbers by partitioning tens and ones. In English, they've been discovering fascinating facts about the moon and learning about the moon landing - an exciting topic that has sparked lots of curiosity!

Year 2

Year 2 have been working hard on column addition in maths. They've made great progress, but a little extra practice at home would be helpful too! In history, they've been learning all about the Great Fire of London and have enjoyed exploring the dramatic events of the past. In English, they've been writing beautiful winter poetry after going on a winter walk around the playground to gather inspiration. They've been listening to Vivaldi's Four Seasons as background music to help bring their poetry to life!



Year 3

In geography, Year 3 have been learning all about earthquakes and volcanoes, finding out how and why they happen. In PSHE, they've been talking about their dreams and goals, thinking about the challenges they might face and how everyone's goals are different. As part of their learning, they'll be asking parents about their own goals - because we never stop learning and growing, no matter how old we are!

Year 4

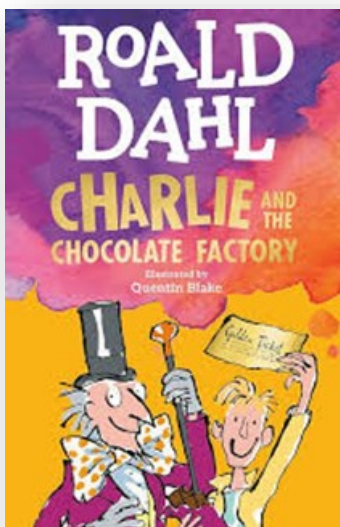
Year 4 have started an exciting new topic all about chocolate! They've been reading Charlie and the Chocolate Factory by Roald Dahl and are loving the story so far.

In science, they've been learning about the digestive system and the purpose of different types of teeth - a fascinating topic with lots of interesting facts!

Year 5

Year 5 had a special treat this week when they were taught by coaches from Brentford Football Club during one of their PE lessons. They learned about the importance

of exercise and healthy eating, practiced ball skills, and did jumping jacks. The children had a fantastic time, and this outreach project will continue for the next six weeks, helping them stay fit and active!



Let it Snow...

Winter's chill is here, and many children are eagerly anticipating snow! After a few first cold snaps of the season, here's an overview of how we handle snow days at school:

If We Stay Open:

Our top priority is ensuring there are enough staff on-site to safely supervise the children. If staff can safely get to work, we will remain open, which is always our goal.

On snowy days, please send your children to school with:

- A change of clothes (any warm, comfortable clothing—not necessarily uniform)
- Extra shoes
- A warm coat



Children who bring these items will be allowed to play outside in the snow with their friends.

If We Need to Close:

If weather conditions make it unsafe for staff to travel, we may need to close. You can monitor local news for travel advisories. Early in the morning, we will assess the situation with staff and local conditions.

Should we need to close:

- We will notify families as early as possible, aiming for **7:15 a.m.**
- Notifications will be sent via the ScholarPack to inform their classes. Please be aware that during such times, messaging systems can become overwhelmed, but we will do our best to communicate promptly.

Overnight Worsening Conditions:

In rare cases where we open but the forecast worsens, we will notify you the evening before if closure the next day is necessary. We understand the importance of early notice for alternative planning.

Our priority is to remain open whenever possible because we love seeing the children enjoy the snow—especially when they have warm, dry clothes to change into afterward!





St Mary's Hampton
School Presents

ST MARY'S SCHOOL ORCHESTRA

A new initiative for the
love of music

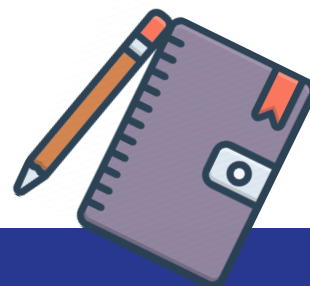
**STARTING AFTER HALF
TERM, SUBJECT TO
INTEREST**

Email the school for
details
[admin@stmaryshampton
school.org.uk](mailto:admin@stmaryshampton.school.org.uk)

ST MARY'S HAMPTON
Church of England Primary School



Reminders...



Date	Event
Friday 31st January 2025	9am - MHST: Coffee morning for all parents across the school for managing anxiety for children
17th February - 21st February 2025	Half Term
Thursday 6th March 2025	World Book Day
Wednesday 12th March and Thursday 13th March 2025	Parents Evening
Friday 14th March 2025	Inset day: School Closed for Staff Training
Tuesday 18th March 2025	Year 1 Trip to Brooklands Museum
Friday 4th April 2025	9am - MHST: Coffee morning for all parents across the school for managing anxiety for children – SATs prep
Friday 4th April 2025	Easter Service
Monday 24th April 2025	Year 2 Trip to Wisley Gardens



eSafety Update

Fortnite Battle Royale

Fortnite Battle Royale is rated PEGI 12 due to moderate violence, meaning it is not suitable for children under the age of 12.

What is Fortnite?

There are different versions of Fortnite, including Fortnite Battle Royale, which is free to play (although it contains in-app purchases). In Battle Royale, up to one hundred players compete against each other until one winner remains.



What do I need to be aware of?

- **Chatting and inappropriate language:** Fortnite includes voice and text chat, which may mean your child encounters strangers and may hear inappropriate language. Ensure your child knows how to report/block any players that make them feel uncomfortable.
- **In app purchases:** Players can purchase V-Bucks so make sure you restrict purchases and do not store your card details.

Parental Controls

Fortnite provides several parental controls in your child's Epic account to help you create a safer environment for your child. The controls allow you to:

- disable voice chat
- filter language
- manage which experiences your child can access based on their age
- set a PIN to add friends
- set a PIN for purchases
- set time limits
- set appropriate privacy settings.

Also, remember to set up age-appropriate parental controls on the device your child is playing on.

Reporting/Blocking Features

As always, ensure your child knows how to use the reporting and blocking features and that they know they should talk to you or another trusted adult if anything concerns them.

Further information

You can find out more here:

- <https://safety.epicgames.com/en-US/parental-controls>
- <https://parentzone.org.uk/article/fortnite>



winter health



Keeping Healthy this Winter:

NHS Pharmacy First Service – an NHS service being provided by pharmacies across England for children and adults

We wanted to let you know about an NHS service, which is available in Boots pharmacies across England, called the **NHS Pharmacy First Service**.

What is Pharmacy First?

The NHS-funded service enables children and adults to get convenient access to advice and treatment where appropriate for seven common conditions, without the potential delay of having to wait for a GP appointment. Accessing the service may mean that children feel better and back to school as quickly as possible, as well as supporting parents/carers to also get better if they are unwell with one of the conditions covered under the service. There is no need to make an appointment; parents or carers can pop into their local Boots pharmacy with their child and ask for help under the service.

The service supports with the following conditions for people in the age groups specified below:

- **Earache** (aged 1 to 17 years)
- **Impetigo** (aged 1 year and over)
- **Infected insect bites and stings** (aged 1 year and over)
- **Sore throats** (aged 5 years and over)
- **Sinusitis** (aged 12 years and over)
- **Uncomplicated urinary tract infections** (UTIs) in women (aged 16 to 64 years)
- **Shingles** (aged 18 years and over)

The person will see a pharmacist in a private consultation room. The pharmacist will provide advice and, if clinically appropriate, offer to supply treatment for the condition*. If treatment is provided, an electronic message will be sent to the person's GP surgery so their health record can be updated.

Should the pharmacist be unable to help, they will direct the person to their GP surgery or other healthcare professional, as appropriate.

With the ever-increasing pressures on the NHS, particularly during these busy winter months, it is important to us, as a community pharmacy, that we do all we can to provide support.

Therefore, we would really like your help in driving awareness of this fantastic service to your parents and carers and to encourage them to think **Pharmacy First**.



winter health



To support you with this, we have created the below paragraph you could use in your regular communications, to highlight the service to parents and carers:

NHS Pharmacy First Service

Did you know that the NHS Pharmacy First Service enables children and adults to get convenient access to healthcare advice and treatment where appropriate, for seven common conditions without the potential delay of having to wait for a GP appointment? Accessing the service may mean that can help children feel better and back to school as quickly as possible, as well as supporting parents/carers to also get better if they are unwell with one of the conditions covered under the service. There is no need to make an appointment; parents or carers can pop into their local Boots pharmacy with their child and ask for help under the service.

Support for the following conditions can be accessed under the service, free of charge (unless NHS prescription charges apply):

Common condition	Patient eligibility
Earache	1 to 17 years
Impetigo	1 year and over
Infected insect bites and stings	1 year and over
Sore throats	5 years and over
Sinusitis	12 years and over
Uncomplicated urinary tract	Women 16 to 64 years
Shingles	18 years and over

Any further information is available at [Information on national pharmacy services - Community Pharmacy England](#)



Adverts



Hampton Wick Royal Cricket Club

Hampton Wick Royal CC has a thriving juniors section that caters for children aged 5 upwards.

This year we have set up a girls section and are looking to grow it. We have entered the Middlesex softball league and Surrey hardball league for girls and hosted a Surrey SMASH event at the club, with a number of clubs from across Surrey attending.

HWRCC won both the u10s and u11s events.



All ages and standards are welcome.

Training takes place on Sundays 1-3pm, starting 19th Jan.

HWRCC have kindly waived all girls' memberships this year!

Bushy Park
off Park Road
Hampton Wick,
Kingston-upon-Thames
Surrey KT1 4AZ
<https://hwrcc.co.uk/>

For more information in joining the girls section contact James Watson:
j.watson@heathfield-jun.richmond.sch.uk

