

# Welcome from your Co Headteachers,

Dear Parents and Carers,

What a week it has been for us all!

This week, we had the privilege of welcoming Ofsted inspectors to St Mary's. Their visit was a wonderful opportunity to showcase the heart of our school community, and we couldn't be prouder of how everyone came together to represent the very best of what we do here.

As the saying goes, "It takes a village to raise a child," and this week has been a powerful reminder of that truth. The dedication of our staff, the enthusiasm and fantastic behavior of our students, and the unwavering support from you, our parents and carers, all played a huge part during the inspection. On behalf of the entire school, we want to say a big thank you for your hard work, kind words, and encouragement throughout the process.

We know many of you are eager to see the report, and we share that excitement. However, the final report will take a few weeks to be published. As soon as it becomes official, we will be sure to share it with you.

**A quick reminder: tomorrow is a staff training day, so the school will be closed to students. We will reopen as usual on Monday, 25th November.**

In light of the inspection, we've had to make some adjustments to our planned events. Please note that Parents' Evening has been rescheduled for next week, with your previously selected time slots carried over. A separate letter with the details has been sent from the school office, so please refer to that for further information.

Finally, we want to take a moment to express how incredibly proud we are of our students and staff. Their teamwork, dedication, and positive energy were incredibly inspiring. They really did demonstrate to our visitors what a vibrant and special community St Mary's is.

Thank you once again for your continued support. We look forward to resuming our regular newsletter next week, filled with updates and reflections on all the exciting things happening at St. Mary's.

God Bless,

Mrs. Woodier and Mrs. Wayland  
Co-Headteachers, St Mary's School



# Reminders...



Date	Event
Friday 22nd November	Inset Day
Wednesday 27th and Thursday 28th November	Whole school Parents Evenings
Thursday 21st November	Non-uniform day in exchange for bottles for the Christmas fair
Tuesday 26th November at 9.15am—10am	New Reception 2025 Stay and Play
Thursday 28th and Friday 29th November at 9am	New Reception open morning (2025 intake)
Friday 29th November	Non-uniform day in exchange for cakes for the Christmas Fair
Saturday 30th November	St Mary's Christmas Fair 2pm—5pm
Thursday 5th December at 9.10am	EYFS, Year 1 and 2 Nativity
Monday 2nd December	Class Christmas postboxes officially open
Friday 6th December 2.30pm	Class Act performances in whole school celebration worship
Tuesday 10th December at 10am	Choir performance for the residence at Linden Hall
Wednesday 11th December	Christmas lunch and Christmas jumper day
Friday 13th December at 2.30pm	Rock steady concert (invited event only)
Friday 20th December	Christmas Church Service
Each Friday morning at 8.45am (MTV Hampton)	Parents prayer group



# PTFA updates

## Christmas Fair

We'd love for all families to come along and enjoy our festive Christmas Fair! It's the perfect opportunity to get into the holiday spirit while supporting our school. There will be plenty of fun activities, games, and wonderful stalls, as well as a chance to pick up some unique gifts and treats. This is a fantastic event to bring the whole family together, meet other parents and teachers, and spread some festive cheer. Your participation helps raise funds for school resources and special projects, so come along, have fun, and support our school community! We look forward to seeing you there!



## St Mary's Annual Christmas Tree Sale



Once again, we are offering you the opportunity to buy your Christmas Tree from us and why would you not want to:

- Choice of 5 different tree sizes
- Fantastic prices
- Nordmann Fir (the lowest needle drop trees)
- 1st or Premium grade trees

To purchase your tree(s) please go to <https://st-marys-school-hampton-ptfa.square.site> or use the QR Code

### Size Options:

3-4ft **£30**

4-5ft **£34** 5-6ft **£38** 6-7ft **£45** 7-8ft **£60**

**Please order by 5pm on the Friday 22nd November 2024**



Tree collection will be on **Sunday 1st December 2024** with a time to be confirmed from St Mary's School Car Park on a first come first served basis, any queries please email [ptfa@stmaryshamptonsschool.org.uk](mailto:ptfa@stmaryshamptonsschool.org.uk)

## Christmas Tree Sale

The annual Christmas Tree Sale at St Mary's Hampton is a festive event where high-quality, fresh Christmas trees are sold to support the school. Organised by the school's PTA or Friends of St Mary's, the sale is not only a fundraiser but also a wonderful way for the school community and local families to come together and get into the holiday spirit.

Typically, the sale offers a variety of tree sizes and types, allowing families to pick out their perfect tree for the season. Proceeds from the event go towards school projects, resources, or activities that benefit the children.



# Adverts





# Adverts





**ST MARY'S HAMPTON**  
CHURCH OF ENGLAND PRIMARY SCHOOL

**RECEPTION 2025 OPEN MORNINGS**

Thursday 10th October  
Friday 11th October

Thursday 24th October  
Friday 25th October

Thursday 28th November  
Friday 29th November

Join us from **9am** for a talk and tour 

Please contact the school office to book your place

**Flourishing through faith, hope and love**

 [admin@stmaryshamptonschool.org.uk](mailto:admin@stmaryshamptonschool.org.uk)  020 8979 5102



# Adverts

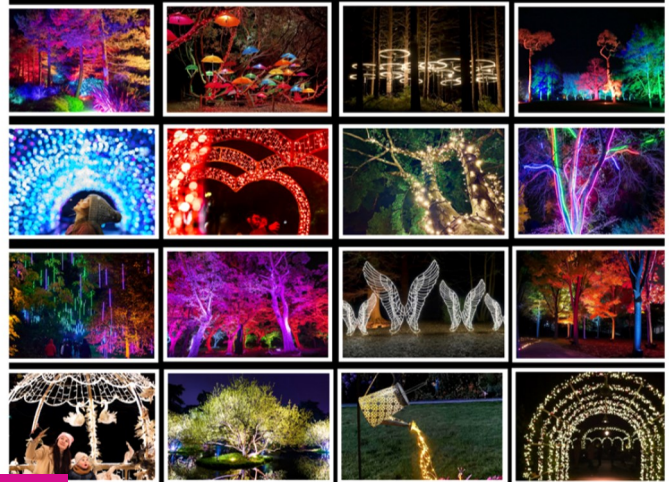
## The Fulham Palace Festive Light Display

**28th November to 22nd December.**

**5.00pm - 9.00pm**

**FULHAM PALACE**

[www.londonilluminatedlights.co.uk](http://www.londonilluminatedlights.co.uk)



# Santa Fun Run 2024



**Sunday 8 December at Bushy Park.**

**Sunday 15 December at Sandown Park**

**Racecourse followed by a Christmas Market.**

9.30am for a 10.00am start.



Scan the QR code or visit  
[pah.org.uk/santafunrun](http://pah.org.uk/santafunrun)



Princess Alice Hospice

**ST MARY'S HAMPTON**

Church of England Primary School

